

4.17.1. Melanocytic Tumors (I): Pigmented epithelial tumors of uvea & retina

Combined hamartoma

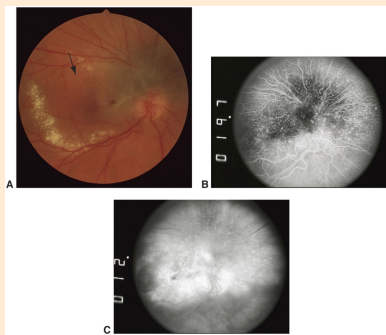


Figure 17-15 (© 2020 American Academy of Ophthalmology)

- rarely in the periphery
- at the disc margin
- darkly pigmented
- minimally elevated
- retinal traction
- tortuous retinal vessels
- hard exudates
- exudative complications

Adenoma/adenocarcinoma

- ciliary epithelium
 - pigmented
 - nonpigmented
 - indistinguishable from ciliary body melanoma
- RPE
 - adenoma
 - rare
 - deeply melanotic
 - enlargement
 - malignant change
 - adenocarcinoma
 - rare
 - minimal metastatic potential
- Fuchs adenoma
 - clinical
 - clinically inapparent
 - arise from ciliary crest
 - glistening white
 - irregular
 - histology
 - benign proliferation of nonpigmented ciliary epithelium
 - basement membrane-like material

Acquired hyperplasia

- tissue of origin
 - pigmented ciliary epithelium
 - clinically inapparent
 - may mimic ciliary body melanoma
 - RPE
 - adenomatous hyperplasia
 - may mimic choroidal melanoma
- etiology
 - trauma
 - inflammation
- management
 - observation to document stability