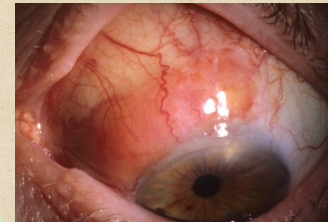


Conjunctival Lymphoma

Case Description

elderly man with painless slowly enlarging pink-red lesion on the surface of his left eye

Image Description



relatively well-defined salmon-pink subconjunctival mass involving the bulbar conjunctiva of the left eye

(© 2020 American Academy of Ophthalmology)

Differential Diagnosis

conjunctival lymphoma

- age > 50 yr
- usually unilateral 20% are bilateral
- soft & mobile
- ± orbital component
- most are extranodal marginal zone B-cell lymphoma (MALT type)

conjunctival lymphoid hyperplasia

clinically similar to lymphoma

extrascleral extension of uveal lymphoma

subconjunctival salmon-colored mass fixed to the underlying sclera

conjunctival amyloidosis

salmon-colored nodular elevation that may be associated with hemorrhage



(© 2020 American Academy of Ophthalmology)

episcleritis/scleritis

History

- onset & course
- symptoms
 - decreased vision
 - double vision
 - pain
 - redness
- skin lesions elsewhere
- systemic lymphoma

Data acquisition

Physical Exam

- VA
 - APD
 - EOM
 - Hertel
 - optic disc swelling
 - attachment to underlying sclera
 - AC rxn
 - lid lesions
 - iris, CB, or choroidal lesions
 - systemic adenopathy
- orbital involvement
- extrascleral extension of uveal lymphoma
- uveal lymphoma
- systemic lymphoma

Additional Testing

orbital imaging

histologic examination

diffuse monomorphic sheet of lymphocytes in the stroma without well-defined follicles

immunohistochemistry

predominance of B lymphocytes that are kappa or lambda light chain restricted

flow cytometry

to show clonality

molecular genetic testing

require fresh tissue

Assessment

conjunctival lymphoma

- excisional if small
- incisional if large
- ± supplemental cryotherapy
- if complete excision not possible

EBRT

intralesional interferon-α2b

systemic rituximab

chemotherapy

if systemic disease

refer to oncologist for systemic evaluation

underlying systemic lymphoma may be present or develop in ≤ 31%

Treatment

Patient Education

General

explain importance of long-term medical evaluation for lymphoma

Prognosis

good prognosis if localized
more guarded prognosis if systemic

Complications

systemic lymphoma may develop!

higher risk if bilateral